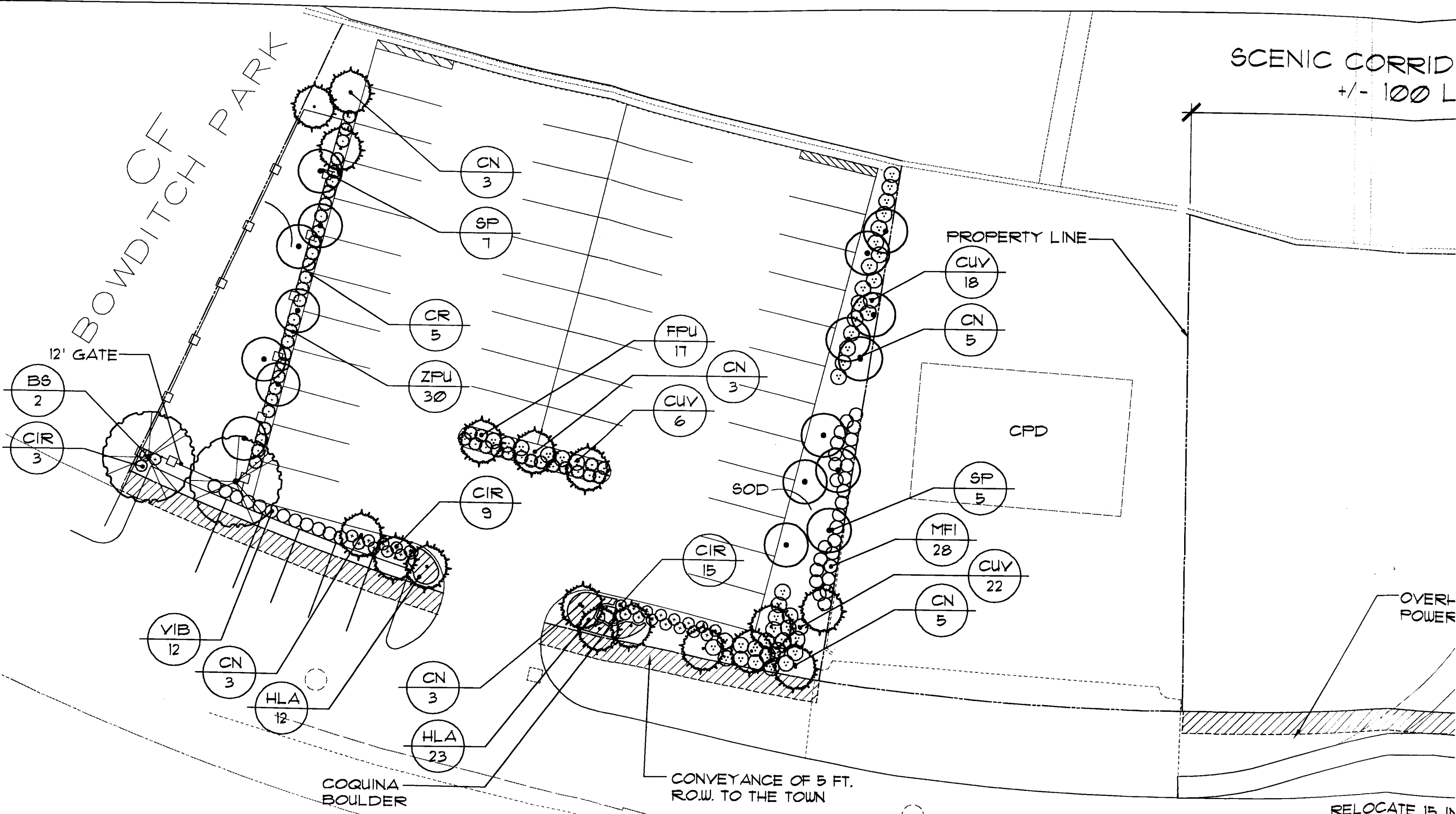


BOWDITCH PARK

SCENIC CORRID
+/- 100 L



12' GATE

PROPERTY LINE

CPD

SOD

OVERPOWER

CONVEYANCE OF 5 FT.
ROW. TO THE TOWN

COQUINA
BOULDER

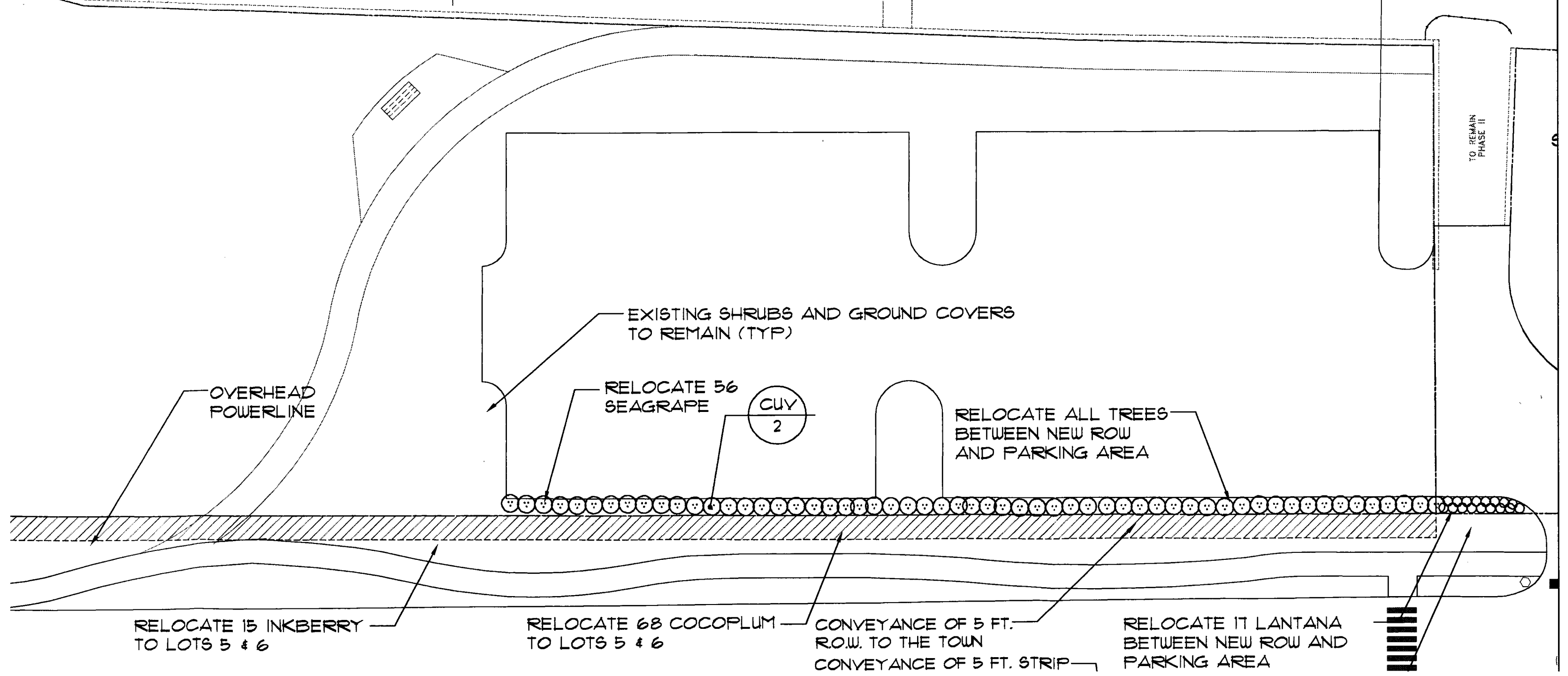
RELOCATE 15 IN

SCENIC CORRIDOR AREA
+/- 100 L.F.

MATANZAS PASS

RIP RAP.
SEE ENGINEERING
DRAWINGS

SCENIC CORRIDOR AREA
+/- 140 L.F.



RELOCATE 15 INKBERRY
TO LOTS 5 & 6

RELOCATE 68 COCOPLUM
TO LOTS 5 & 6

CONVEYANCE OF 5 FT.
ROW. TO THE TOWN
CONVEYANCE OF 5 FT. STRIP
FOR ROW. TO THE TOWN ± 3 FT.
LANDSCAPE STRIP REMAINS

RELOCATE 17 LANTANA
BETWEEN NEW ROW AND
PARKING AREA
RELOCATE 21 LANTANA TO
LOTS 5 & 6

ESTERO BLVD.

J - PUD

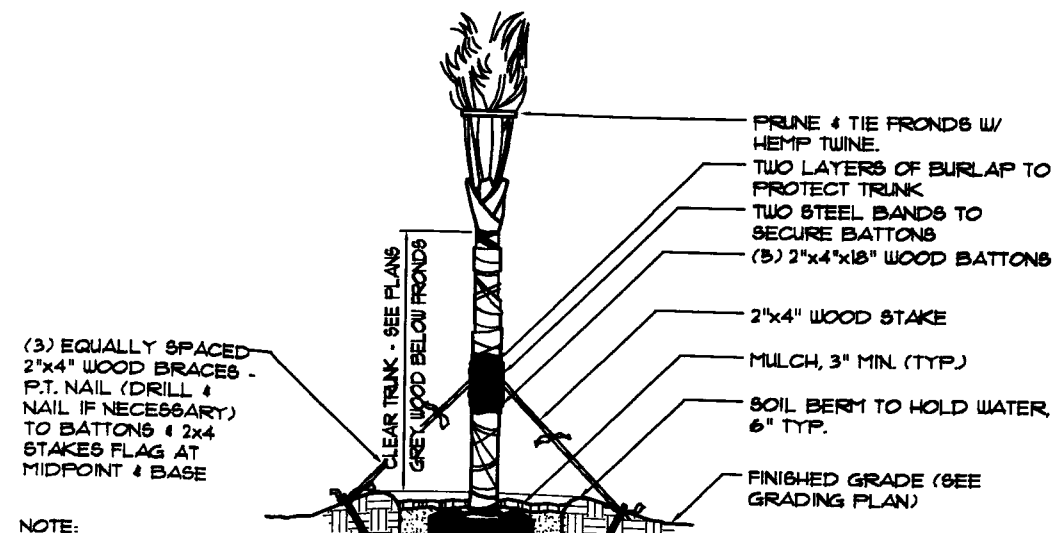
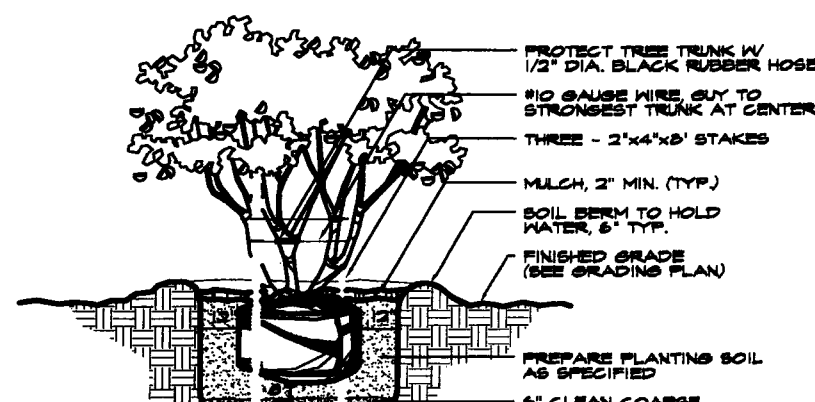
WALKWAY-BEACH
ACCESS EASEMENT

RELOCATE 56 COCOPLUM
AND 6 PITCH APPLE TREES
TO 3' LANDSCAPE STRIP

CAPTIVA VILLAS - MPD

ESTERO BOULEVARD

REMARKS
4' C.T., Specimen
Full & Heavy Heads
Full Rounded Canopy
Stagger Heights
REMARKS
3 Gallon, Full
7 Gallon, Full to Base
1 Gallon
3 Gallon, Full
7 Gallon, Full to Base
3 Gallon, Full
3 Gallon, Full



NOTE:

CONSULTANT:

REVISIONS:

SCALE	1" =
DATE	7/2
PROJECT #	07.
DESIGNED	YM
CHECKED	RP
SEAL	

mark 12

PLANT LIST

SHEET LA-1

TREES & PALMS

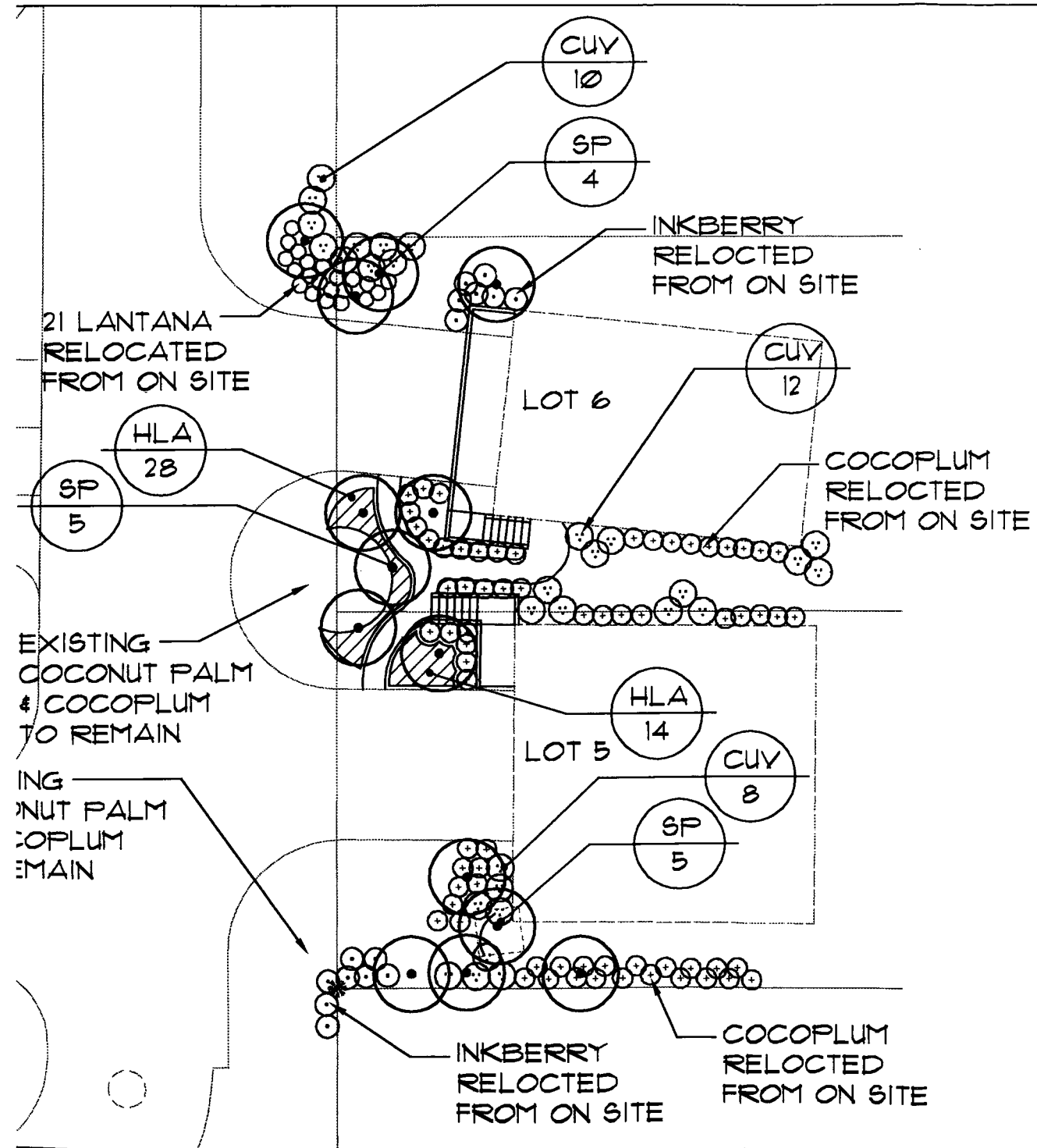
KEY	QTY	BOTANICAL NAME	COMMON NAME	SIZE	SPACING	REMARKS
BB	2	Bauhinia blakeana	Hong Kong Orchid	12'-14' Ht	A.S.	4' C.T. Specimen
CN	22	Cocos nucifera	Coconut Palm	12'-18' C.T.	A.S.	Full & Heavy Heads
CR	5	Clusia rosea	Pitch Apple	10'-12' x 6'-8'	A.S.	Full Rounded Canopy
SP	26	Sabal palmetto	Sabal Palm	10' - 18' C.T.	A.S.	Stagger Heights

SHRUBS & GROUND COVERS

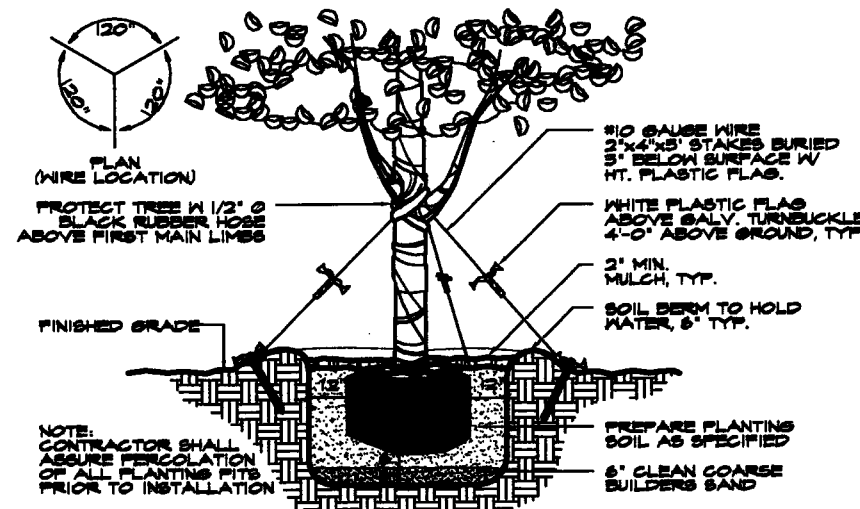
KEY	QTY	BOTANICAL NAME	COMMON NAME	SIZE	SPACING	REMARKS
CIR	27	Chrysobalanus icaco 'Red Tip'	Cocoplum	18"-24" x 18"-24"	36" O.C.	3 Gallon, Full
CUV	78	Coccoloba uvifera	Seagrape	48" x 24"	5" O.C.	7 Gallon, Full to Base
FPU	17	Ficus Pumila	Creeping Fig	10"-12" TRL.	24" O.C.	1 Gallon
HLA	77	Hymenocallis latifolia	Spider Lily	18"-20" x 18"-20"	30" O.C.	3 Gallon, Full
MFI	28	Michelia figo	Banana Shrub	24"-30" x 18"-24"	3' O.C.	7 Gallon, Full to Base
VIB	12	Viburnum suspensum	Viburnum	24"-30" x 12"-15"	36" O.C.	3 Gallon, Full
ZPU	30	Zamia pumila	Coontie	12"-15" x 12"-15"	30" O.C.	3 Gallon, Full

SOD AND MULCH

MULCH	Pine Straw Mulch	4" Min. Deep
SOD	Argentine Bahia	

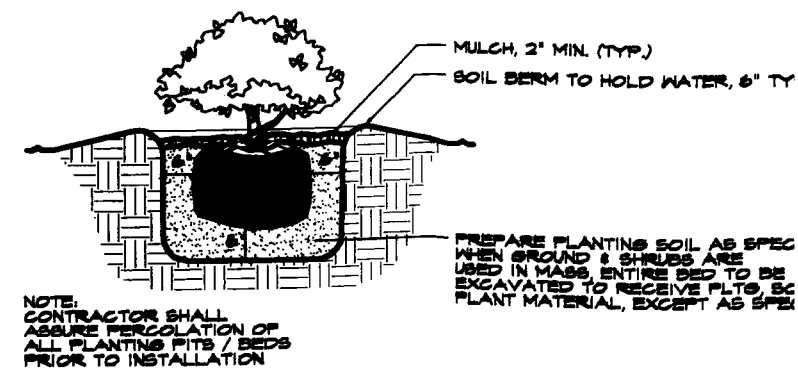


LOTS 5 & 6



1 LARGE TREE DETAIL
LA-1 N.T.S.

FILE NAME: 022501621



2 SHRUB AND GROUND COVER DETAIL
LA-1 N.T.S.

FILE NAME: 022501621